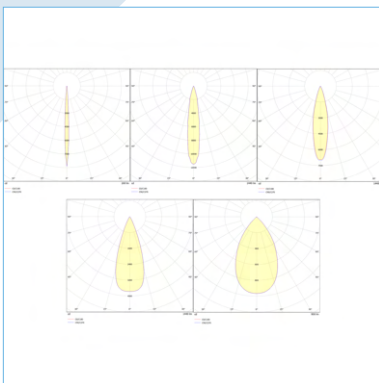
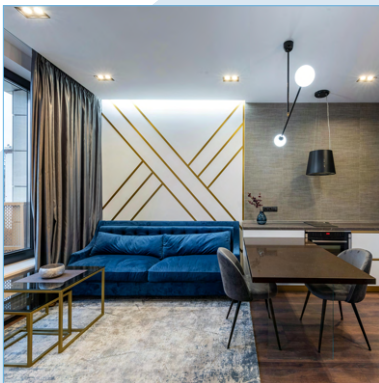
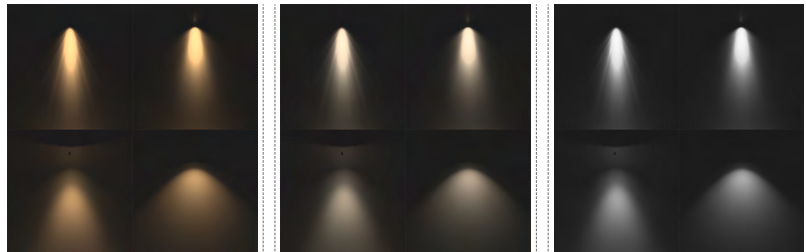




Khallis-A Duo Spot Light Adjustable



Provide focus on your space with our high-intensity, adjustable beam light that highlights your subject with clarity and impact. Perfect for professional settings, it accentuates details and creates striking contrasts, leaving surroundings subtly in shadow.



General Information

Shape	Rectangular
Mounting	Ceiling Adjustable Recessed
Lighting Application	General Indoor, Living Rooms, Bedrooms
Dimension	L 170mm W 85mm H 80mm 80mm 95mm
Housing Material	Die-cast Aluminum
Housing Color	White/White White/Black Black/White Black/Black
Ingress Protection	IP20

Lamp Characteristics

Lamp Type	LED
Light Source	COB
Luminous Flux	1960lm 2800lm 5040lm
Efficacy	140 lm/W
Color Temperature	3000K 4000K 5000K
Color Rendering Index	>80 Ra
Beam Angle	8° 15° 24° 38° 55°

Electrical Information

Total Power	14W 20W 36W
Voltage	220V AC
Control Gear	On-Off

Product Code

Not interselectable**									
Brand (BR-)	Product (PRO)	Mounting (MO)	Dimension (DM)**	Body/Baffle Color (BB)	IP Rating (IP)	Lumen (LUM)**	CCT (CT)	Beam Angle (BA)	Control (C)
Zarelux (ZL-)	Khallis-A Duo Spot Light (KDS)	Ceiling Adjustable (CA)	L 170mm (17)	White/White (WW)	IP20 (20)	1960lm (196)	3000K (30)	08deg (08)	On-Off (O)
			L 170mm (17)	White/Black (WB)		2800lm (280)	4000K (40)	15deg (15)	
			L 170mm (17)	Black/White (BW)		5040lm (504)	5000K (50)	24deg (24)	
				Black/Black (BB)				38deg (38)	
								55deg (55)	